



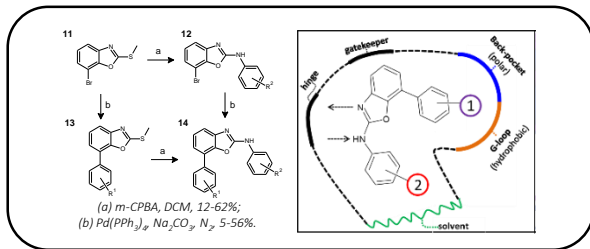
Postgraduate Research in Biomedical Engineering



The **Computational and Medical Chemistry Laboratory (CMCL)** is located within the Department of Biomedical Engineering, Faculty of Engineering, King Mongkut's Institute of Technology Ladkrabang. Our research interests lie in the **Pharmaceutical Engineering** field, a multi-disciplinary area that encompasses Chemistry, Physics, Biochemistry, Biology, Engineering & Medicine.

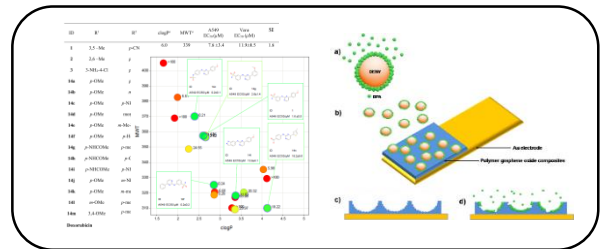
M.Eng. and Ph.D. positions are available in Biomedical Engineering at KMITL. Applications from B.Eng., B.Sc., M.Eng. and M.Sc. students with a background in Chemical Engineering, Chemistry or Physical Sciences are sought. **Funding is available to cover living expenses and associated research costs.** If you are interested in a career in Biomedical Engineering then please get in touch to see how research with us can help you achieve your aim.

1. Drug Design / Synthesis



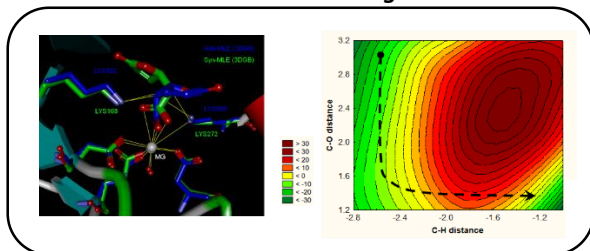
Design and synthesize new compounds to help treat diseases of the developing world including malaria, cancer and TB.

2. Physical Chemistry & Biochemical Sensors



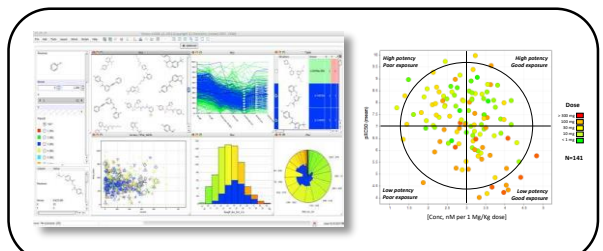
Develop biosensors for medical and environment use. Assess the drug physical properties to gain understanding of the origin of activity in disease/target based bioassay results.

3. Molecular Modelling



Simulate the reaction mechanisms of proteins, computationally - design new compounds for synthesis using on ligand based and structure based design methods.

4. Cheminformatics



Statistically analyze the vast amount of data on drugs and development compounds to help understand the origin of success and failures in drug discovery.

Research Scholarships

We have fully funded M.Eng. and Ph.D. positions available. If you are interested in one of our research themes then we would love to hear from you. If you have or are expecting to graduate with a B.Eng., B.Sc., M.Eng. or M.Sc. then please get in touch with us to discuss our research opportunities.

- MSc Scholarships: 8-10,000 baht per month
- PhD Scholarships: 10-12,000 baht per month
- Postdoctoral Positions: 30-35,000 baht per month

Graduates of the program will gain critical skills leading to employment opportunities in the pharmaceutical and biotechnology industry in Thailand and abroad.

Website

Please see our website for further details or contact us directly via email or telephone.

www.bme-cmcl.weebly.com/

Contact Us

- Dr. M. Paul Gleeson (English language contact)
 - Biomedical Engineering, Faculty of Engineering
 - Email: paul.gl@kmitl.ac.th Tel: 0869779678
- Assoc. Prof. Duangkamol Gleeson (English language contact)
 - Department of Chemistry, Faculty of Science
 - Email: duangkamol.gl@kmitl.ac.th, Tel: 0816077000

